

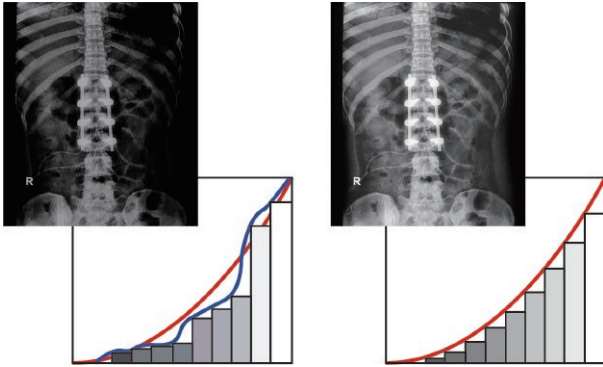
# MX-Series LED-backlit Display 24" | 22"

## Professional Clinical Review Displays of High Performance, Easy Maintenance



The MX-Series displays are designed for durability and easy cleaning. It features Full HD resolution, IEC/EN 60601-1 standard and DICOM Part 14 specification compliance, and provides excellent image quality, colour reproduction and image contrast. The MX-Series is specifically designed for 24/7 operation in demanding medical settings.





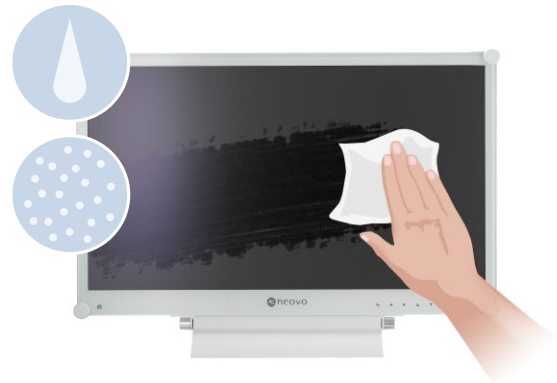
DICOM Mode

### Consistent Image Clarity

The MX-Series is compliant with the DICOM Part 14 standard specifications. This calibration function corrects gamma and luminance to achieve the smooth grayscale that is required for the accurate and consistent appearance of clinical data and other review images.

### Easy to Clean and Reliable Design

The anti-acid and anti-alkali coating treatment of the NeoV™ Optical Glass help the MX-Series withstand alcohol and other commonly used cleaning solutions. With the displays also bolstered by metal casing, this proprietary glass technology shields them from scratches and other damage.



### Versatility and Multitasking

Multiple signal source options, including HDMI and DisplayPort 1.2, offer the versatility for the MX-Series to integrate with other instruments. Its broad connectivity enables the PiP/PbP capability that makes multitasking possible—studying different images or matching medical records—in a single display.

### Medical-Grade Safety Certification

The MX-Series adopts a specially designed low-voltage medical-grade power supply to ensure safety, performance, and reliability in any professional medical environment. Compliance with the IEC/EN60601-1 standards ensures their safe and reliable performance in demanding medical settings.



IEC/EN 60601-1  
Medical-Grade

## Features

- Compliance with DICOM Part 14 with calibrated greyscale and brightness
- Full HD 1920 x 1080 resolution
- Anti-Burn-in™ technology prevents image ghosting
- NeoV™ Optical Glass and metal housing for excellent cleanability and protection
- PiP/PbP functions enable multi-source viewing simultaneously
- Image Enhancer: 3D Deinterlace / Noise Reduction
- Versatile connectivity: DisplayPort, HDMI, DVI, VGA
- EN60601-1 and IEC60601-1 medical certification
- Equipotential terminal connector
- IP22 Compliant (IEC 60529 Standard)
- EcoSmart Sensor automatically adjusts brightness level according to ambient lighting conditions
- Gamma selection and black-level adjustment
- Selectable aspect ratio
- Designed and developed for continuous 24/7 operation
- VESA mounting for flexible installation in healthcare settings



## Specifications

### MX-24

### MX-22

Panel		LED-Backlit TFT LCD	LED-Backlit TFT LCD
Panel Type	Panel Size	23.6"	21.5"
Max. Resolution	Pixel Pitch	FHD 1920 x 1080	FHD 1920 x 1080
Brightness	Contrast Ratio	0.272 mm	0.248 mm
Viewing Angle (H/V)	Disply Colour	300 cd/m <sup>2</sup>	250 cd/m <sup>2</sup>
Response Time	Response Time	1,000 : 1	1,000 : 1
Frequency (H/V)	H Freq.	170°/160°	170°/160°
	V Freq.	16.7M	16.7M
		3 ms	3 ms
Input	VGA	24 kHz-83 kHz	24 kHz-83 kHz
	DVI	50 Hz-75 Hz	50 Hz-75 Hz
	HDMI	15-Pin D-Sub	15-Pin D-Sub
	DisplayPort	24-Pin DVI-D	24-Pin DVI-D
		1.4 x 1	1.4 x 1
		x 1	x 1
Audio	Audio In	Stereo Audio Jack (3.5 mm) x 1	Stereo Audio Jack (3.5 mm) x 1
	Speaker	2W x 2	2W x 2
Power	Power Supply	External	External
	Power Requirement	DC 12V, 2.5A	DC 12V, 2.5A
	On Mode	< 21W (On)	< 19W (On)
	Stand-by Mode	< 0.5W	< 0.5W
	Off Mode	< 0.5W	< 0.5W
NeoV™ Optical Glass	Thickness	3.0 mm (0.12")	3.0 mm (0.12")
	Reflection Rate	< 1%	< 1%
	Transmission Rate	> 97%	> 97%
	Coating Hardness	> 9H	> 9H
Operating Conditions	Temperature	0°C-40°C (32°F-104°F)	0°C-40°C (32°F-104°F)
	Humidity	10%-90% (non-condensing)	10%-90% (non-condensing)
Storage Conditions	Temperature	-20°C-60°C (-4°F-140°F)	-20°C-60°C (-4°F-140°F)
	Humidity	5%-95% (non-condensing)	5%-95% (non-condensing)
Mounting	VESA FPMPMI	Yes (100 x 100 mm & 75 x 75 mm)	Yes (100 x 100 mm & 75 x 75 mm)
Stand	Tilt	0° to 15°	0° to 15°
Security	Kensington Security Socket	Yes	Yes
Dimensions	w/Base (W x H x D)	562.4 x 396.8 x 155.0 mm (22.1" x 15.6" x 6.1")	513.2 x 368.5 x 155.0 mm (20.2" x 14.5" x 6.1")
	Packaging (W x H x D)	672.0 x 517.0 x 204.0 mm (26.5" x 20.4" x 8.0")	614.0 x 477.0 x 204.0 mm (24.2" x 18.8" x 8.0")
Weight	w/Base	7.8 kg (17.2 lb)	6.7 kg (14.7 lb)
	Packaging	10.1 kg (22.3 lb)	8.8 kg (19.4 lb)
Regulation Approval	Certification & Compliance	CE, IEC/EN 60601-1, MDD, RoHS, WEEE, REACH	CE, IEC/EN 60601-1, MDD, RoHS, WEEE, REACH
Accessories	Supplied	Power Cord, Power Adaptor, 15-Pin D-Sub Cable, Audio Cable, Quick Start Guide, Warranty Card	Power Cord, Power Adaptor, 15-Pin D-Sub Cable, Audio Cable, Quick Start Guide, Warranty Card
Optional Accessories		Wall Mount: PMK-01 Desk Mounts: DMC-01, DMC-02D, DMS-01D, DMS-01Q, ES-02 Handle: HDL-01 Ceiling Mount (Landscape only): CMP-01 + WMK-03 Wall Mounts (Landscape only): WMA-01, WMK-01, WMK-03	Wall Mount: PMK-01 Desk Mounts: DMC-01, DMC-02D, DMS-01D, DMS-01Q, ES-02 Handle: HDL-01 Ceiling Mount (Landscape only): CMP-01 + WMK-03 Wall Mounts (Landscape only): WMA-01, WMK-01, WMK-03

All specifications are subject to change without prior notice.

Copyright © 2018 AG Neovo. All rights reserved. The name AG Neovo is a trademark of AIC.

All other trademarks are the property of their respective owners.

P/C: MX2400/MX2200 Version 1.3, 20181012



**Global Headquarters**

Taipei, Taiwan

**EMEA Regional Headquarters**

Capelle a/d IJssel, The Netherlands

**North & South America Regional Headquarters**

San Jose, CA, U.S.A.

**Asia-Pacific Regional Headquarters**

Taipei, Taiwan

**Canada Sales Office**

Vancouver, B.C., Canada

**China Sales Office**

Shanghai, China

**Czech Republic Sales Office**

Brno, Czech Republic

**Denmark Sales Office**

Støvring, Denmark

**Germany Sales Office**

Mechernich, Germany

**Italy Sales Office**

Livorno, Italy

**Poland Sales Office**

Warsaw, Poland

**Spain Sales Office**

Barcelona, Spain

**Ukraine Sales Office**

Lviv, Ukraine

[www.agneovo.com](http://www.agneovo.com)