

Standard Commercial Displays - SE3KE Series

Easily Managed Digital Signage



Simplify and easily manage your promotional content with the SE3KE Series, designed for a wide range of business purposes. The SE3KE Series has a practical design, with a slim bezel and low depth that helps with easy installations and efficient space utilization. The wide variety of screen sizes offers a model that will fit in virtually any business environment.



Built-in Speaker Model (10 W x 10 W)

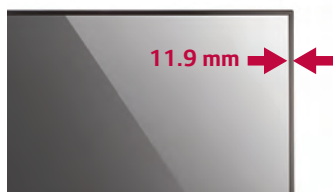
Key Features

Sleek Design



Slimmer Bezel

The slim bezel allows a perfect fit for a sleek look.



Bezel

Detachable Logo

Portrait mode allows the logo to be positioned in the desired setting.



Cable Management

The well-organized cable terminals in the back optimize available space.



USB Content Management



USB Content Scheduling

Play and schedule your content via a USB connection, with no Internet or server connection required*.



* Supported Content Type : Video (MPEG1/2/4, H.264), Audio (MP3, AC3, MPEG, AAC, HEAAC, LPCM), Image (JPEG, PNG, BMP)

Dust & Humidity Protection



Conformal Coating

Circuit board reliability is enhanced with conformal coating that protects against dust, iron powder, humidity and other harsh conditions.



Standard Commercial Displays - SE3KE Series

Easily Managed Digital Signage



Screen Sizes

65", 55", 49", 43", 32"



Back Side

SE3KD Series

- Edge-lit LED
- Brightness: 350 cd/m² (65": 400 cd/m²)
- Bezel: T/L/R-11.9 mm (32": 13.0 mm), B-18.0 mm
- Depth: 38.6 mm (65": 41.1 mm, 32": 55.5 mm)
- HDMI (2), DVI, RJ45, IR Receiver, RS232C in/out, USB
- Built-in Speaker: 10 W x 10 W

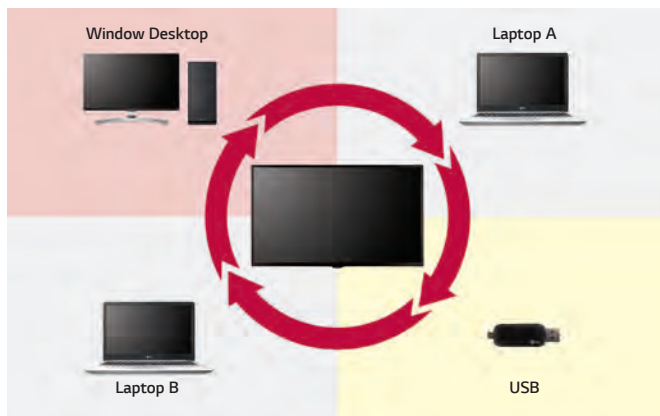


Other Features

Convenient Management

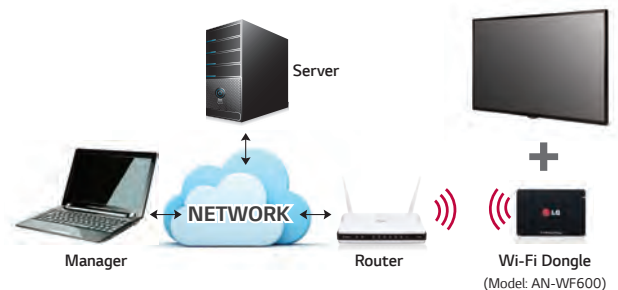
Enhanced Connectivity

Through its diverse interface, the signage lets you connect more than one device for optimal use.



Wi-Fi Support

SE3KD Series supports Wi-Fi USB dongle connection for convenient content distribution. And SNMP support ensures convenient network management.



* SNMP: Simple Network Management Protocol

Convenient Screen Mode

Aspect Ratio Sustainability*

Sustain the same resolution and picture quality while powering on/off by receiving EDID¹⁾ through switch IC.



1) Extended Display Identification Data.

* Installation Menu > LG Digital Signage > PM Mode

Stand-by Screen*

Even without signal from the media player, the network does not turn off completely, so remote control is possible, which prevents unnecessary power usage and enables efficient management.



Scheduled Screen Wash**

Prevent residual images with the screen transition feature.

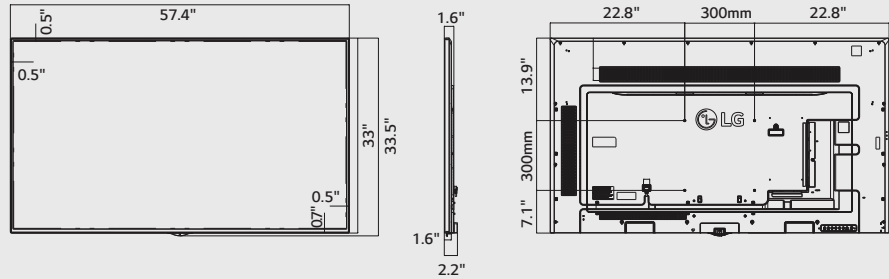


** Installation Menu > ISM Method

Dimension

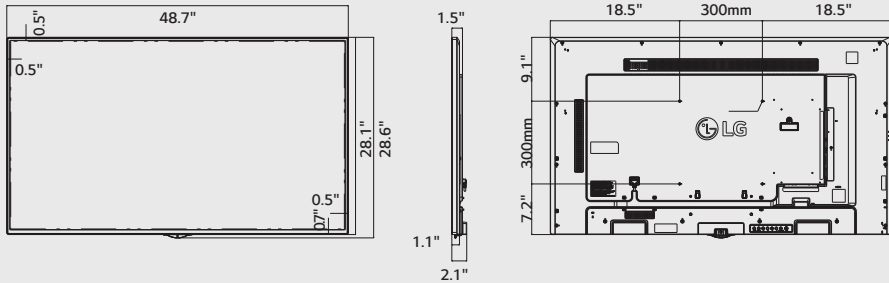
65"

57.4" x 33" x 2.2" /
61.5 lbs



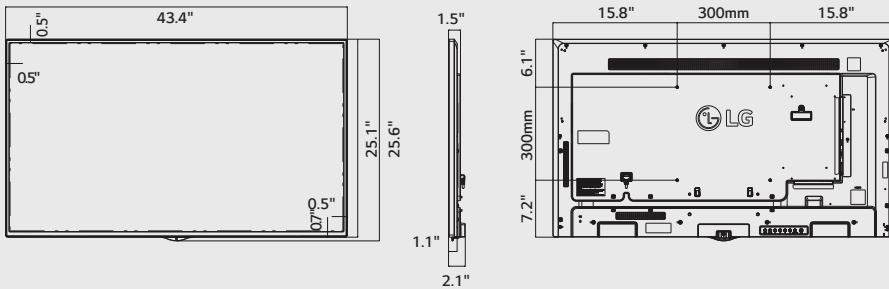
55"

48.7" x 28.1" x 2.1" /
38.6 lbs



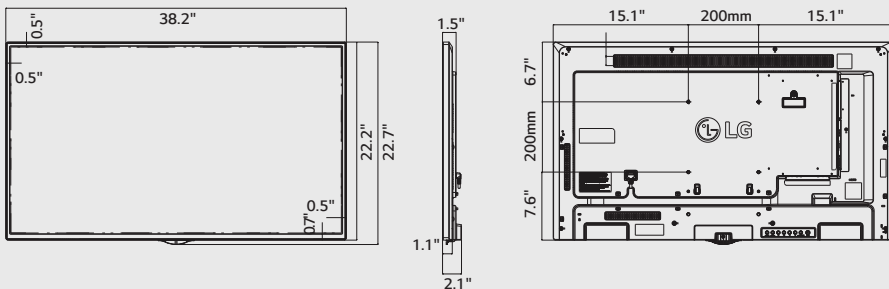
49"

43.4" x 25.1" x 2.1" /
31.5 lbs



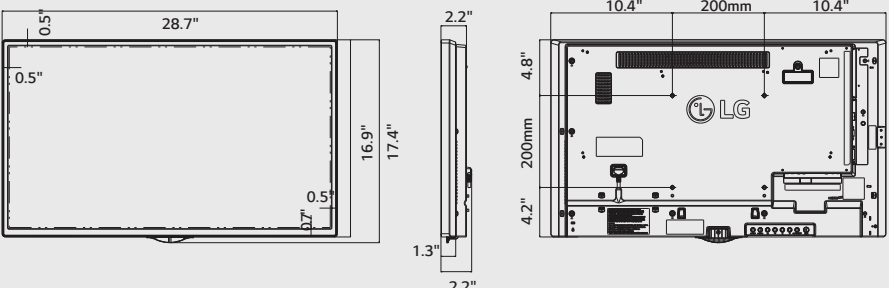
43"

38.2" x 22.2" x 2.1" /
22 lbs



32"

28.7" x 16.9" x 2.2" /
11.9 lbs



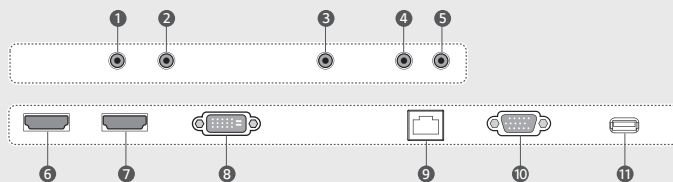
Specifications

SE3KE Series		65SE3KE	55SE3KE	49SE3KE	43SE3KE	32SE3KE
PANEL	Screen Size	65"	55"	49"	43"	32"
	Panel Technology	IPS (PD)				
	Aspect Ratio	16:9				
	Native Resolution	1,920 x 1,080 (FHD)				
	Brightness	400 cd/m ²	350 cd/m ²			
	Contrast Ratio	1,300:1	1,100:1			
	Dynamic CR	500,000:1				
	Viewing Angle (H x V)	178 x 178				
	Response Time	10 ms (G to G BW), 7.6 ms (WOT)	12 ms (G to G BW), 9 ms (WOT)	12 ms (G to G BW), 10.1 ms (WOT)	12 ms (G to G BW), 9.4 ms (WOT)	10 ms (G to G BW), 7.1 ms (WOT)
	Surface Treatment	Hard coating (3H), Anti-glare treatment of the front polarizer (Haze 1% (Typ.))				
	Lifetime (typical)	50,000 hrs (typical)				
	Guaranteed Operating Hour	18 Hours				
Orientation	Landscape & Portrait					
CONNECTIVITY	Input	HDMI (2), DVI, RGB, Audio, USB				
	Output	Audio				
	External Control	RS232C (In/Out), RJ45, IR Receiver				
PHYSICAL SPECIFICATION	Bezel Color	Black				
	Bezel Width	11.9 mm (T/R/L), 18 mm (B)				13 mm (T/R/L), 18 mm (B)
	Monitor Dimensions (W x H x D)	57.4" x 33" x 2.2"	48.7" x 28.1" x 2.1"	43.4" x 25.1" x 2.1"	38.2" x 22.2" x 2.1"	28.7" x 16.9" x 2.2"
	Weight (Head)	61.5 lbs	38.6 lbs	31.5 lbs	22 lbs	11.9 lbs
	Weight (Head + Stand)	73 lbs	45.9 lbs	38.8 lbs	27.6 lbs	13.7 lbs
	Monitor with Optional Stand Dimensions (W x H x D)	57.4" x 35.4" x 11.6"	48.7" x 30.4" x 8.6"	43.4" x 27.4" x 8.6"	38.2" x 24.5" x 7.6"	28.7" x 18.9" x 6.1"
	Carton Dimensions (W x H x D)	61.5" x 38.5" x 7.5"	52.4" x 31.8" x 6.7"	47.1" x 29.9" x 6.5"	41.4" x 25.6" x 4.8"	31.9" x 20.1" x 5.2"
	Packed Weight	74.5 lbs	47.8 lbs	38.4 lbs	26.9 lbs	14.8 lbs
VESA™ Standard Mount Interface	300 mm x 300 mm				200 mm x 200 mm	
SPECIAL FEATURES	USB Content Scheduling, Conformal Coating, SNMP Support, Wi-Fi Ready (Dongle), Power Management Modes (Sustain Aspect Ratio / Stand-by Screen, etc.), No Signal Image setting, Enhanced ISM (Image Sticking Minimization) Mode, Holiday Schedule / Local Time Auto Setting, Fail-over (USB, RGB, DVI, HDMI), Wake on LAN					
ENVIRONMENTAL CONDITIONS	Operating Temperature Range	32° F to 104° F				
	Operating Humidity Range	10 % to 80 %				
POWER	Power Supply	100-240V~, 50/60Hz				
	Power Type	Built-In Power				
POWER CONSUMPTION	Typ.	95 W	70 W	65 W	60 W	50 W
	Smart Energy Saving	70 W	55 W	50 W	45 W	35 W
AUDIO POWER	20 W (10 W x 2) for Internal Speaker (6 ohm)					
STANDARD (CERTIFICATION)	Safety	UL / cUL / CB / TUV / KC				
	EMC	FCC Class "A" / CE / KCC				
	ErP / Energy Star	NA / Yes (Energy Star 7.0)				
MEDIA PLAYER COMPATIBILITY	External Media Player Attachable	Yes (MP500 / MP700)				No
SOFTWARE COMPATIBILITY	Content Management Software	SuperSign W				
	Control and Monitoring Software	SuperSign C				
	Basic	Remote Controller (2 batteries included), Power Cord, QSG, RGB Cable, Regulation Book, Phone to RS232C Gender				
ACCESSORIES	Optional	Stand (ST-652T), Media Player	Stand (ST-492T), Media Player	Stand (ST-492T), Media Playe	Stand (ST-432T), Media Player	Stand (ST-322T)

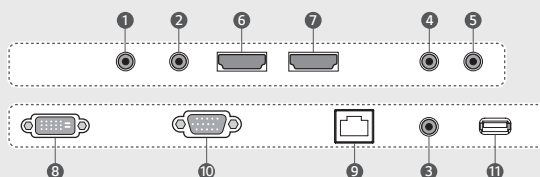
Connectivity

- 1 RS-232C IN
- 2 RS-232C OUT
- 3 AUDIO IN
- 4 AUDIO OUT
- 5 EXT IR IN
- 6 HDMI in 1
- 7 HDMI in 2
- 8 DVI-D IN
- 9 LAN
- 10 RGB IN
- 11 USB

65SE3KE



55SE3KE / 49SE3KE / 43SE3KE / 32SE3KE



- <http://www.lg.com/us/business/commercial-display>
- <http://www.twitter.com/LGCommDisplays>
- <http://www.facebook.com/LGcommercialdisplays>
- <http://www.linkedin.com/company/lg-commercial-displays-usa>
- <http://www.youtube.com/lgcommercialdisplayusa>

LG may make changes to specifications and product descriptions without notice.
 Copyright © 2018 LG Electronics Inc. All rights reserved. "LG Life's Good" is a registered trademark of LG Corp. The names of products and brands mentioned here may be the trademarks of their respective owners. | SPEC_SE3KE_051830_PR

