



# W1A

## Monitor Wall Mount with Quick-Fix System

### Main Features

- Maximise work area with close to wall fitting
- 360° rotation, 60° swivel and  $\pm 15^\circ$  tilt
- Ball joint design for easy finger adjustment
- Security lock and screws to enhance stability
- Quick-fix two-piece mounting system
- Cable management design
- For 13"- 30" monitor of up to 20kg
- VESA 75 / 100

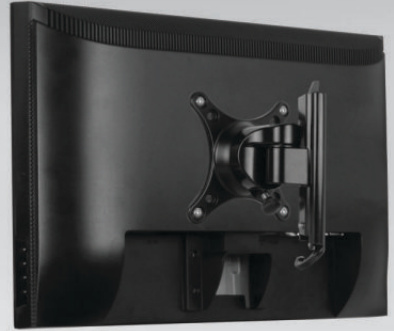


# W1A

## Monitor Wall Mount with Quick-Fix System

ARCTIC **W1A** is a single pivot 3 axis articulation bracket mount, offers smooth adjustable screen angle with 360° rotation, 60° swivel and ±15° tilt. The ball joint design gives the flexibility to perfectly position your desktop monitor to reduce eye, neck, shoulder and back strain. It mounts closely to the wall and maximise your work area.

Compatible with monitor from 13" to 30", the two-piece direct mounting system allows quick installation and support up to 20 kg in weight.



Specifications	
VESA standard	75 / 100
Monitor Size	13" - 30"
Work Load	Max. 20kg / 44lbs
Articulation	360° rotation, 60° swivel and ±15° tilt
Wall Distance	10 cm
Compatibility	LCD / LED TV, Desktop monitors and Plasma TV such as LG, Viewsonic, HP, NEC, AOC and Dell
Warranty	2 Years

### Box Contents

Monitor mount x 1 / Wall mount x 1 / M4 (12mm) x 4 / M4 (30mm) x 4 / M5 (12mm) x 4 / M5 (30mm) x 4 / Allen wrench (3mm) x 1 / Allen wrench (4mm) x 1 / Wood screw (Ø6 x 50mm) x 2 / Plastic peg x 2 / Spacer x 4 / User Guide x 1



Adjustable screen angle -  
360° Rotation; 60° Swivel;  
±15° Tilt



Cable management design



Security lock and screws  
to enhance stability

### Table of VESA Mounting Interface Standard

Designation	Width × Height	Screw	Compatible
MIS-D 75	75 mm × 75 mm	M4, M5	Yes
MIS-D 100	100 mm × 100 mm	M4, M5	Yes
MIS-E	200 mm × 100 mm	M4	No
MIS-F	200 mm × 200 mm	M6, M8	No
	400 mm × 400 mm		
	600 mm × 200 mm		
	600 mm × 400 mm		
	800 mm × 400 mm		
280 mm × 150 mm			

