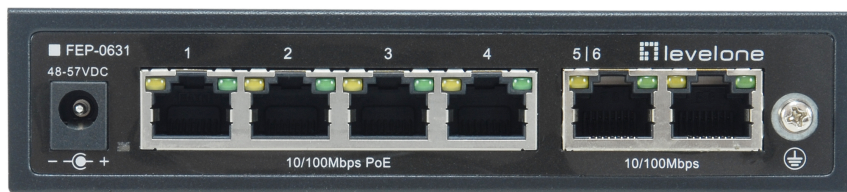
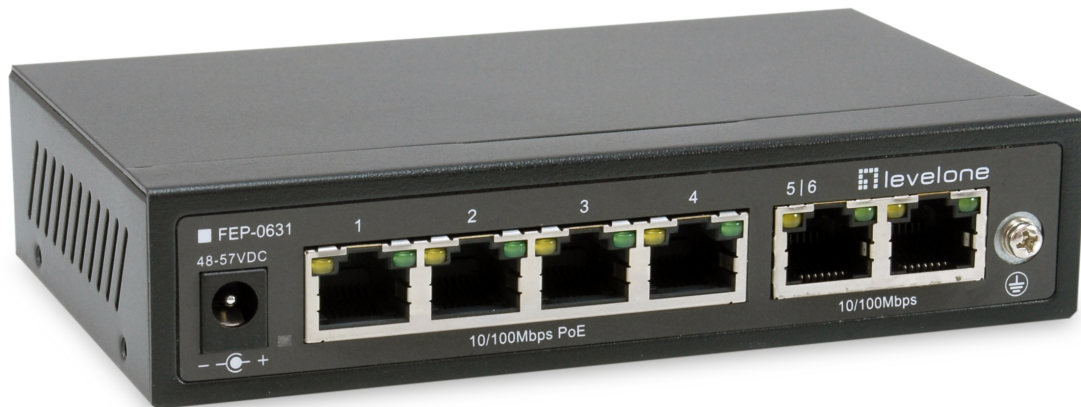


# FEP-0631, 6-Port Fast Ethernet, 4-Port PoE, 802.3af/at, 250M, PoE Auto checking ,LevelOne

## Product Images

---





## Short Description

---

- IEEE 802.3af/at PoE compliant to simplify deployment and installation
- Supports port-based VLAN
- Connection distance of up to 250m at 10Mbps data rate
- Auto-detection and protection of non-standard PoE devices
- IEEE 802.3x Flow Control protects against lost packets for reliable data transmission
- Total PoE power budget: 60W, up to 30W per port
- PoE Auto-check function

## Description

---

The LevelOne FEP-0631 is a Fast Ethernet PoE switch with a total of 6 ports, two of which is available as uplink port and 4 ports for Power over Ethernet. Per PoE port a power supply of up to 30W is possible. The total PoE power budget is 60W. Distances up to 250m at 10Mbps is supported. It is an ideal solution when users use a combination of PoE and non-PoE devices. The FEP-0631 four PoE-enabled ports make it the ideal solution for users using PoE-enabled devices in the workplace. This can include a mix of PoE IP phones, PoE Wifi APs and PoE IP cams. It is the perfect solution for environments that want to upgrade their

equipment and LAN infrastructure to PoE capability. The switch automatically detects the connected IEEE 802.3at/af standard device and provides these devices with power and data over a single cable. In addition, the FEP-0631 enables users to provide a stable and reliable high-speed LAN environment with store-and-forward switching architecture, packet error filtering and blockage-free packet forwarding. The 802.3x flow control mechanisms operate in both full and half duplex modes. This device supports the N-Way Auto Negotiation protocol, which automatically detects network speed and duplex mode. For instant fault detection, the FEP-0631 is equipped with a full range of LEDs to help monitor and troubleshoot the network.

## Additional Information

---

Approval and compliance	CE/FCC
Max. operating temperature (°C)	50
Max. storage humidity (%)	95
Max. storage temperature (°C)	85
Min. operating temperature (°C)	-10
Min. storage temperature (°C)	-40
Backplane (Gbps)	1.2 Gbps
Packet buffer	448K
Dip switch	x 2
Indicators	Power, Active, 10/100 Mbps , PoE
MAC address table	1K
Pin assignment and polarity	1/2 (+), 3/6 (-)
Power output	VDC48-57
Power supply	VDC48V/1.25A
Standards	IEEE 802.3 10-BASE-T, Ethernet, IEEE 802.3u 100-BASE-TX, Fast Ethernet, IEEE 802.3x Full-duplex Flow Control, IEEE 802.3af Power over Ethernet (PoE), IEEE 802.3at Power over Ethernet Plus (PoE+)
Features	4*10/100M PoE ports and 2*10/100M Conforming to IEEE 802.3af/at standard, single port PoE power up to 30W
Product weight (kg)	0.340
Product breadth (mm)	135
Product depth (mm)	80
Product height (mm)	30
Color	Black
EAN	4015867225851
Model number	FEP-0631
Package contents	FEP-0631 Power adapter and power cord Quick Installation Guide
802.3af/at PoE	4
Grade	Commercial
Data Rate	Fast Ethernet
PoE Supported	Yes
Manageable	No
Fanless	Yes
Concurrent ports	Total6.00

PoE Power Budget

Total60.00

