



XGS1010-12

12-Port Unmanaged Multi-Gigabit Switch with 2-Port 2.5G and 2-Port 10G SFP+

The Zyxel XGS1010-12 comes with eight Gigabit Ethernet Ports, two 2.5 Gigabit ports and two 10 Gigabit SFP+ uplink ports with plug-and play, stylish design. It has been designed specifically for customers who require simple management over a variety of mixed environments from home to office.

Connect 802.11ac or 802.11ax access points to the 2.5 Gigabit ports for true maximum wireless speed delivery. Deliver your data swiftly to your client devices from your NAS, workstations, or other core networking essential with 10 Gigabit SFP+. The XGS1010-12 perfectly blends into homes and offices with its compact size while providing high performance without any noise.



10G SFP+ Uplink



Multi-Gigabit speed support



QoS for better traffic control



Plug and Play



Fanless, noiseless design



Advanced energy-savings at work



XGS1010-12

Get Things Done Faster with 10G

Benefits

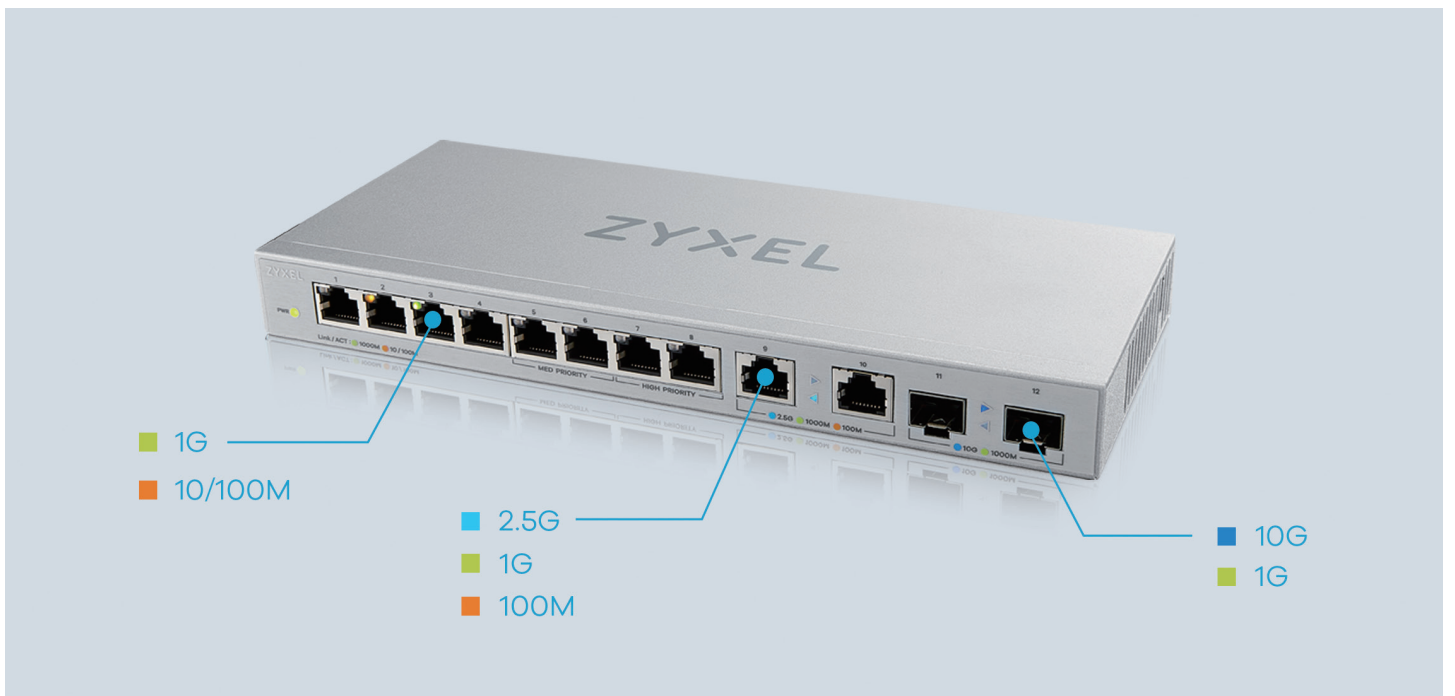
Maximized 10G speed for content creators

The XGS1010-12 provides two SFP+ ports compatible with 10GbE which offers higher transmission speeds and allows customers to instantly upgrade to a hybrid high-speed network environment at a cost-effective price.



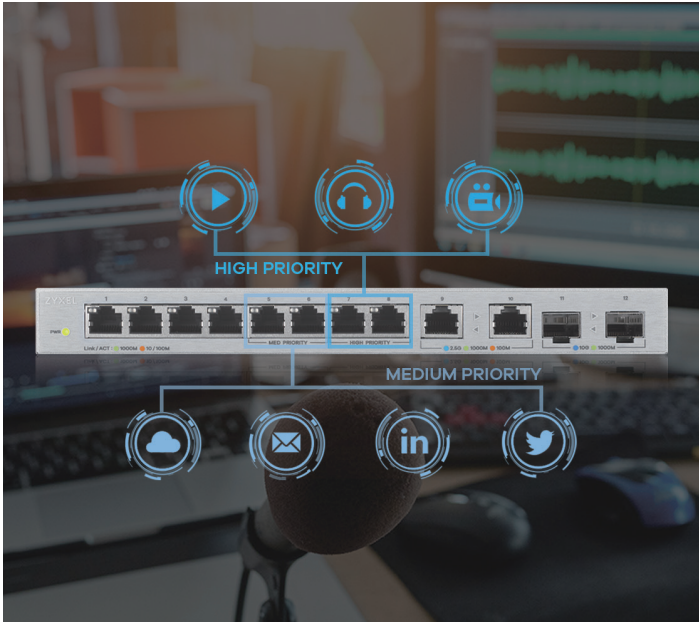
Unlock Multi-Gigabit potential for your devices

Support data transmission speed among 10G, 2.5G, 1G, 100M, capable of servicing a range of network devices such as gaming laptops, desktops, workstations, servers, network attached storage (NAS) devices, or IEEE wireless access points. The XGS1010-12 also features a handy LED indicator that shows the link rate with different color.



QoS for better traffic control

XGS1010-12 comes with two high-priority and two medium priority ports, which provides considerably enhanced download quality while bandwidth priority settings give you a better surfing, gaming, and streaming experience.



Plug and Play

Its easy plug-and-play design allows you to connect the XGS1010-12 to VoIP, media players, game consoles, set-top box, and any other web browsing devices to your home or studio network without any configuration.



Fanless, noiseless design

Extend your network without disrupting your quiet business environment. This switch features a fanless design that ensures silent operation and greater reliability over time with no moving parts.

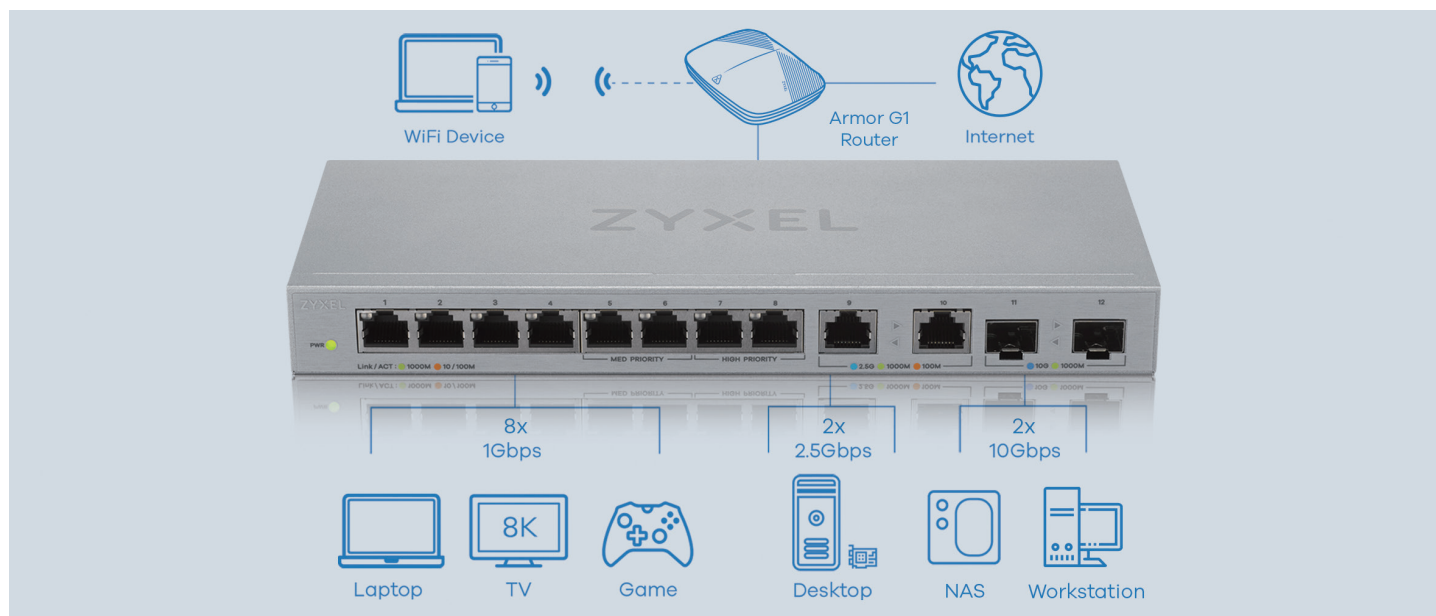


Advanced energy-savings at work

Built-in IEEE 802.3az Energy Efficient Ethernet (EEE) function automatically detects network traffic and adjusts power consumption dynamically to reduce power usage during low link utilization periods.



Application Diagram



Specifications

System Specifications

Standard

- IEEE 802.3 10BASE-TX Ethernet
- IEEE 802.3u 100BASE-TX Fast Ethernet
- IEEE802.3ab 1000BASE-T
- IEEE 802.3bz 2500BASE-T Gigabit Ethernet
- SFF-8431
- IEEE 802.3az Energy Efficient Ethernet
- IEEE 802.3x full duplex operation and flow control

Performance

- Switching capacity: 66 Gbps
- Switching forwarding rate: 49 Mpps
- MAC address table: 16 K
- Packet buffer: 1.5 MB
- Jumbo frame support up to 12 KB

Features

- 10M, 100M, 1G, 2.5G and 10G ports for multi speed
- Fanless and quiet
- Plug and Play, Easy use and Quick Install
- Support IEEE 802.3az Energy Efficient
- Desktop and Wall mount
- Auto-MDI/MDIX in all ports
- QoS ports for smooth media streaming, VoIP calls, and online gaming

- 802.1p QoS
- Weighted Round Robin (WRR) priority QoS

Hardware Specifications

Interface

- 8 x RJ-45 10/100/1000 Mbps Ethernet port with metal shielding
- 2 x RJ-45 100/1000/2500 Mbps Ethernet port with metal shielding
- 2 x SFP+
- Hardware reset button

LED Indicator

- PWR: Power
- Port 1-8: Link/Activity
 - Green: 1000 Mbps
 - Amber: 10/100 Mbps
- Port 9-10: Link/Activity
 - Sky Blue: 2.5 Gbps
 - Green: 1 Gbps
 - Amber: 100 Mbps
- Port 11-12: Link/Activity
 - Blue: 10 Gbps
 - Green: 1000 Mbps

Power Supply

- AC-to-DC external power adapter
- Input: 100-240V~50-60 Hz
- Output: 12V DC/1.5A

Power Consumption

- 15.61 watt max

Physical Specifications

- Item dimensions (WxDxH): 250 x 104 x 27 mm (9.84" x 4.10" x 1.06")
- Item weight: 768 g (1.69 lb.)
- Packing dimensions (WxDxH): 306 x 225 x 64 mm (12.04" x 8.86" x 1.06")
- Packing weight: 1217 g (2.68 lb.)

Environmental Specifications

Operating Environment

- Temperature: 0°C to 40°C (32°F to 104°F)
- Humidity: 10% to 90% (Non-condensing)

Storage Environment

- Temperature: -40°C to 70°C (-32°F to 158°F)
- Humidity: 10% to 90% (Non-condensing)

Certifications

- Safety: CE-LVD, BSMI
- EMC: CE, EAC, FCC, BSMI Class B

Package Contents

- Switch
- Power adapter
- Quick Start Guide
- Safety warning and DoC

Accessories

Transceivers (Optional)

Model	Speed	Connector	Wavelength	Max. Distance	DDMI
SFP10G-SR	10 Gigabit	Duplex LC	850 nm	0.3 km (328 yd)	Yes
SFP10G-SR-E	10 Gigabit	Duplex LC	850 nm	0.3 km (328 yd)	Yes
SFP10G-LR	10 Gigabit	Duplex LC	1310 nm	10 km (10936 yd)	Yes
SFP10G-LR-E	10 Gigabit	Duplex LC	1310 nm	10 km (10936 yd)	Yes
SFP-1000T	Gigabit	RJ-45	-	0.1 km (109 yd)	-
SFP-SX-D	Gigabit	Duplex LC	850 nm	0.55 km (601 yd)	Yes
SFP-SX-E	Gigabit	Duplex LC	850 nm	0.55 km (601 yd)	Yes
SFP-LX-10-D	Gigabit	Duplex LC	1310 nm	10 km (10936 yd)	Yes
SFP-LX-10-E	Gigabit	Duplex LC	1310 nm	10 km (10936 yd)	Yes
SFP-LHX1310-40-D	Gigabit	Duplex LC	1310 nm	40 km (43744 yd)	Yes
SFP-ZX-80-D	Gigabit	Duplex LC	1550 nm	80 km (87488 yd)	Yes
SFP-BX1310-10-D	Gigabit	Single LC	1310 nm (Tx) 1490 nm (Tx)	10 km (10936 yd)	Yes
SFP-BX1310-E	Gigabit	Single LC	1310 nm (Tx) 1550 nm (Tx)	20 km (21872 yd)	Yes
SFP-BX1490-10-D	Gigabit	Single LC	1490 nm (Tx) 1310 nm (Tx)	10 km (10936 yd)	Yes
SFP-BX1550-E	Gigabit	Single LC	1550 nm (Tx) 1310 nm (Tx)	20 km (21872 yd)	Yes

Direct Attach Cables (Optional)

Model	Speed	Connector
DAC10G-1M	SFP+ to SFP+	1 m (39.37 inch)
DAC10G-3M	SFP+ to SFP+	3 m (118.11 inch)

Network Adapter Series (Optional)

Model	Product name	Interface
XGN100F	10G Network Adapter PCIe Card with Single SFP+ Port	<ul style="list-style-type: none">• 1 x 10 Gbps SFP+ slot• PCI Express 3.0
XGN100C	10G Network Adapter PCIe Card with Single RJ-45 Port	<ul style="list-style-type: none">• 1 x 10 Gbps RJ-45 Ethernet port (Supported Speeds: 100M/1G/2.5G/5G/10G)• PCI Express 3.0

For more product information, visit us on the web at www.zyxel.com

Copyright © 2022 Zyxel and/or its affiliates. All rights reserved.
All specifications are subject to change without notice.



22/07/22