

## PERFORMANCE

### Processor

AMD Ryzen™ 7 5825U (8C / 16T, 2.0 / 4.5GHz, 4MB L2 / 16MB L3)

### Graphics

Integrated AMD Radeon™ Graphics

### Chipset

AMD SoC Platform

### Memory

16GB Soldered DDR4-3200

### Memory Slots

Memory soldered to systemboard, no slots, dual-channel (Ryzen 5 / 7 models)

### Max Memory

16GB soldered memory, not upgradable

### Storage

1TB SSD M.2 2280 PCIe® 4.0x4 NVMe®

### Storage Support

Models with 76Wh battery: one drive, 1x M.2 SSD

- M.2 2242 SSD up to 512GB
- M.2 2280 SSD up to 1TB

### Storage Slot

Models with 76Wh battery: one M.2 slot

- One M.2 2280 PCIe 3.0 x4 slot

### Card Reader

4-in-1 Card Reader

### Optical

None

### Audio Chip

High Definition (HD) Audio, Realtek® ALC3287 codec

### Speakers

Stereo speakers, 2W x2, optimized with Dolby® Audio™

### Camera

FHD 1080p with Privacy Shutter

### Microphone

2x, Array

### Battery

Integrated 76Wh

### Max Battery Life

Models with 76Wh battery:

MobileMark® 2018@200nits: 13.4 hr

Local video (1080p) playback@150nits: 16.7 hr

### Power Adapter

65W USB-C® (3-pin)

## DESIGN

### Display

15.6" FHD (1920x1080) IPS 300nits Anti-glare

### Touchscreen

None

### Keyboard

Backlit, German

### Case Color

Cloud Grey

### Surface Treatment

Aluminium Stamping (Anodized)

### Case Material

Aluminium (Top), Aluminium (Bottom)

### Dimensions (WxDxH)

356.67 x 233.13 x 16.9 mm (14.04 x 9.18 x 0.67 inches)

### Weight

Around 1.85 kg (4.08 lbs)

## SOFTWARE

### Operating System

Windows® 11 Home, German

### Bundled Software

Office Trial

## CONNECTIVITY

### Ethernet

No Onboard Ethernet

### WLAN + Bluetooth®

Wi-Fi® 6, 11ax 2x2 + BT5.1

### Standard Ports

- 1x USB 3.2 Gen 1
- 1x USB 3.2 Gen 1 (Always On)
- 2x USB-C 3.2 Gen 1 (support data transfer, Power Delivery 3.0 and DisplayPort™ 1.2)
- 1x HDMI® 1.4b
- 1x Card reader
- 1x Headphone / microphone combo jack (3.5mm)

## SECURITY & PRIVACY

### Security Chip

Firmware TPM 2.0

### Fingerprint Reader

Touch Style, Integrated in Power Button

### Other Security

Camera privacy shutter

## SERVICE

### Base Warranty

2-year, Courier or Carry-in

### Included Upgrade

<= 3 Months Premium Care (5WS1E21226)

## CERTIFICATIONS

### Green Certifications

- ENERGY STAR® 8.0
- ErP Lot 3
- RoHS compliant

### Other Certifications

TÜV Rheinland® Low Blue Light (Software Solution)

### Mil-Spec Test

MIL-STD-810H military test passed

## MODEL

<b>TopSeller</b>	: Yes	<b>Announce Date</b>	: 2022-12-09
<b>EAN / UPC / JAN</b>	: 196803948431	<b>End of Support</b>	: 2028-05-29



## Premium Care - Advanced Support from Real People. Real Fast.



### REAL PERSON

Choose how you want to reach us - through the phone, chat or email - our expert technicians will take care of you.



### REAL FAST

Highly trained technicians will provide you real-time solutions, whatever the issue, on your first contact. If needed, our team will schedule an onsite visit for the next business day.



### HASSLE FREE

'Getting started' and 'how-to' assistance for hardware and software. Easy solutions that are simple to reach - that's how Premium Care delivers you the ideal support experience.



### PC HEALTH CHECK

Free annual PC Health Check that allows our experts to spot issues before you do so they can resolve them quickly and help you avoid PC problems.

## Accidental Damage Protection - Protection of your PC from the unexpected.

Experience shows that a significant portion of devices may be damaged (and not covered under warranty) in the first three years. Lenovo's Accidental Damage Protection service covers accidents beyond the system warranty such as drops, spills, bumps and even electrical surges. Make sure your new device has maximum protection, avoid unplanned costs and get peace of mind.

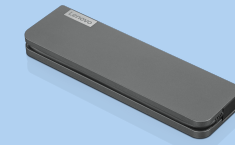
## Base Warranty – Included with the systems you purchase, default 1- or 3-year coverage window.

## Warranty Extensions & Upgrades – Service and protection that's right for your circumstances.

- Pick Up & Return Courier
- Onsite Support
- Technician Installed Customer
- Replaceable Unit Service
- International Warranty Upgrade

Lenovo may not offer the products, services or features discussed in this document in all regions. Lenovo may withdraw an offering at any time. Consult your local representative for information on offerings available in your area. Lenovo reserves the right to change specifications or other product information without notice. Lenovo is not responsible for photographic or typographical errors. Lenovo provides this publication "as is" without warranty of any kind, either express or implied, including the implied warranties of merchantability or fitness for a particular purpose.

## Recommended Accessories



### Lenovo USB-C Mini Dock\_US

40AU0065US

Expand Your Potential with An Universal Mini Dock; Lenovo understands that modern business depends on a wide variety of PC's and even brands to meet their business needs. To make this easier Lenovo USB-C Mini dock is ...



### Lenovo USB-C 65W AC Adapter (UL)

GX20P92530

Lenovo AC Adapter offers fast and efficient charging. Keep one in the office, one at home, and another in your case for convenient access to power. Just plug it into an available outlet to deliver AC power to the comp...

For a full list of accessories and services, please visit:  
<https://smartfind.Lenovo.com>

Lenovo

PSREF  
Product Specifications  
Reference