

2x Fans. 2x Fun.

ASUS Innovations

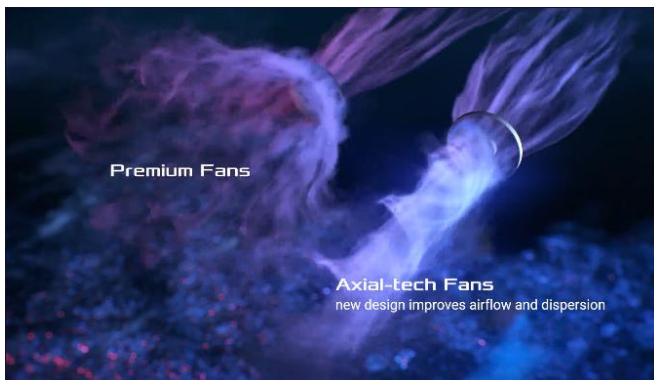
NV Features

- **Powered by NVIDIA DLSS3**, ultra-efficient Ada Lovelace arch, and full ray tracing.
- **4th Generation Tensor Cores:** Up to 4x performance with DLSS 3 vs. brute-force rendering.
- **3rd Generation RT Cores:** Up to 2x ray tracing performance.



Axial-tech Fan Design

A smaller fan hub that facilitates longer blades and a barrier ring that increases downward air pressure.



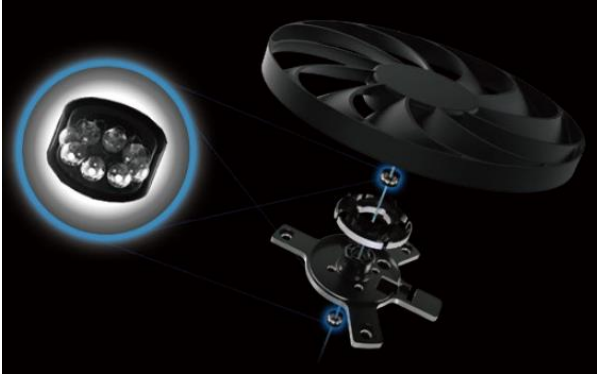
2.5-slot Design

A 2.5-slot design maximizes compatibility and cooling efficiency for superior performance in small chassis.



Dual Ball Fan Bearings

Dual ball fan bearings can last up to twice as long as sleeve bearing designs.



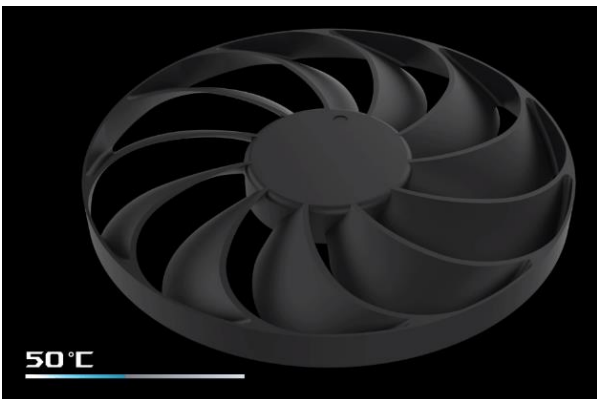
Protective Backplate

A vented backplate works in tandem with Axial-tech fans to keep noise levels down and GPU temperatures under tight control.



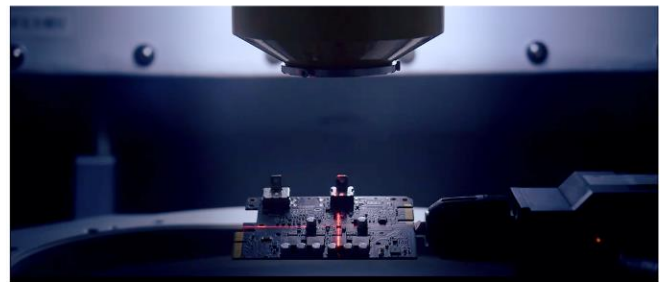
0dB Technology

To eliminate unnecessary noise, a stop mode halts all fans when the GPU temp falls below 50 degrees and power consumption is low.



Auto-Extreme Technology

Fully automated manufacturing for improved reliability and lower environmental impact.



Stainless Steel Bracket

The mounting bracket of the Dual has been beefed up with 304 Stainless Steel that's harder and more resistant to corrosion.



Software

Hardware and software come together to let you fully customize your experience and get the most out of your graphics card. GPU Tweak III allows for hardware tweaking and monitoring, and QuantumCloud utilizes your spare GPU computing power to generate passive income.



ASUS Features

OC
Edition

OC edition

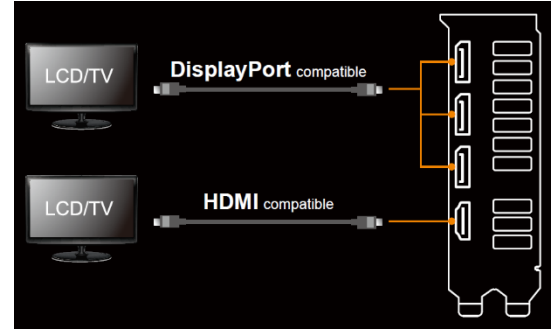
2550 MHz GPU boost clock in OC mode for outstanding gaming experience.

12GB
GDDR6X
Memory

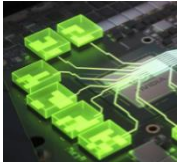
12GB GDDR6X Memory

On-board memory for the best gaming experience & the best resolution.

I/O Specifications



NV Features



Resizable BAR

Resizable BAR is an advanced PCI Express feature that enables the CPU to access the entire GPU frame buffer at once, improving performance in many games.



Game Ready Drivers

GeForce Game Ready Drivers deliver the best experience for your favorite games. They're finely tuned in collaboration with developers and extensively tested across thousands of hardware configurations for maximum performance and reliability.



GeForce Experience

Capture and share videos, screenshots, and live streams with friends. Keep your drivers up to date and optimize your game settings. GeForce Experience lets you do it all. It's the essential companion to your GeForce graphics card



NVIDIA G-SYNC

Get smooth, tear-free gameplay at high refresh rates, plus HDR and more. This is the ultimate gaming display and the go-to equipment for enthusiast gamers.



NVIDIA Ansel

Turn your screenshots into art with this powerful in-game photo mode that captures 360, HDR, and super-resolution photos.



Virtual Reality

The highest performance graphics deliver the smoothest, most immersive VR experiences.

Specifications

Model Name	DUAL-RTX4070S-O12G-EVO
Graphics Engine	NVIDIA® GeForce RTX™ 4070 SUPER
CUDA Cores	7168
OpenGL®	OpenGL® 4.6
Engine Clock	OC mode : 2550 MHz (Boost Clock) Default mode : 2520 MHz (Boost Clock)
Memory Interface	192-bit
Video Memory	12GB GDDR6X
Memory Clock	21 Gbps
Power Connector	1 x 16-pin
I/O	1 x Native HDMI 2.1a 3 x Native DisplayPort 1.4a
HDCP Compliant	HDCP 2.3
Digital Max. Resolution	7680 x 4320
Maximum Display Support	4
NVLink/Crossfire Support	N/A
Recommended PSU	750W
Bus Standard	PCIe 4.0
Package Contents	1 x Speedsetup Manual 1 x Thank you card 1 x Adapter Cable (1 to 2)
Software Bundled	ASUS GPU Tweak III & GeForce Game Ready Driver & Studio Driver: please download all software from the support site.
Slot	2.5 slot
Dimension	
Card Size (mm/inch)	227.2 x 123.24 x 49.6 mm 8.94 x 4.85 x 1.95 inch
Color Box (mm)	368 x 220.5 x 68 mm
Weight	
Single Card (KG)	0.684 KG
Product Weight (with packing) (KG)	1.1631 KG
Note	<p>* Our wattage recommendation is based on a fully overclocked GPU and CPU system configuration. For a more tailored suggestion, please use the “Choose By Wattage” feature on our PSU product page: https://rog.asus.com/event/PSU/ASUS-Power-Supply-Units/index.html</p> <p>* All specifications are subject to change without notice. Please check with your supplier for exact offers. Products may not be available in all markets. If you do not use the latest and current specifications of ASUS products, you shall be liable for all loss and damage claimed by third party to ASUS based on false advertising or any other issues caused from using false specifications of ASUS products.</p>

